



# CAAC Design and Construction Update

6-16-2022

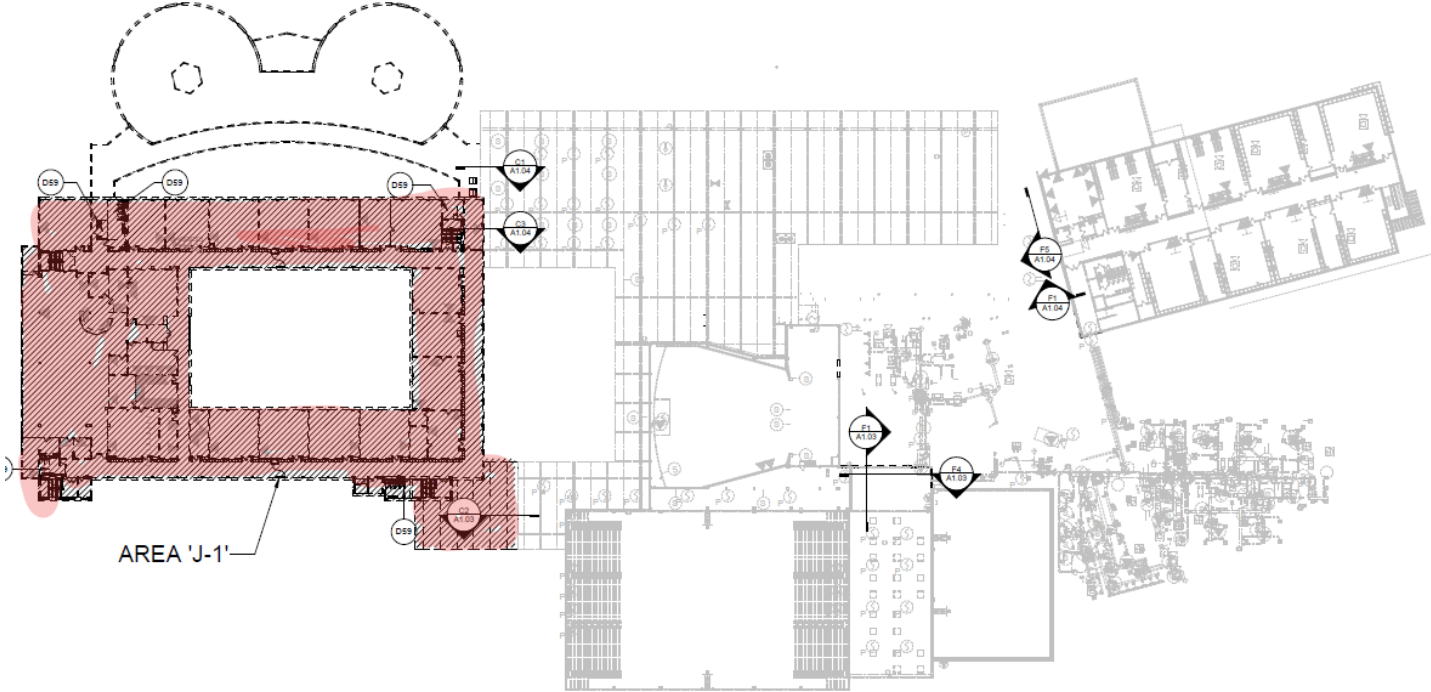


# 2022 Projects

## New Buildings & Additions

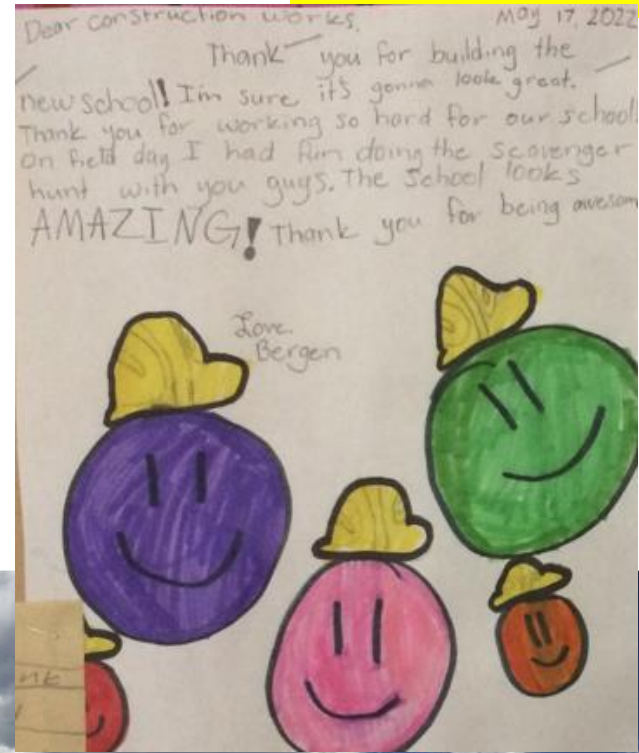
# Alameda HS – Demolition Clear Consulting – ESA

Construction



# Marshdale ES - Replacement HCM – GC GH Phipps

## Construction



# Marshdale ES - Replacement HCM - GC GH Phipps

Construction



# D'Evelyn – 8 CR Addition HCM – GC Himmelman

Construction



# Evergreen MS Efficiency & Future Ready Construction

## AMD – Haselden



# Evergreen MS Efficiency & Future Ready Construction

## AMD – Haselden





Evergreen HS  
Efficiency Future Ready  
DLR – CMGC JHL

Construction



Evergreen HS  
Efficiency Future Ready  
DLR – CMGC JHL

Construction



Evergreen HS  
Efficiency Future Ready  
DLR – CMGC JHL

Construction



# Jeffco Open - Addition HCM - Bassett

Construction



# Powderhorn ES - Addition Hollis & Miller – Himmelman

Construction



# Powderhorn ES - Addition Hollis & Miller – Himmelman

Construction



# Prospect Valley ES - Replacement MOA – GH Phipps

Construction



# Prospect Valley ES - Replacement MOA – GH Phipps

Construction





# Ralston Valley HS - Addition EUA - Himmelman

Construction



# Ralston Valley HS - Addition EUA - Himmelman

Construction



# Standley Lake HS - Addition Cannon – FCI Constructors

Construction



# Standley Lake HS - Addition Cannon – FCI Constructors

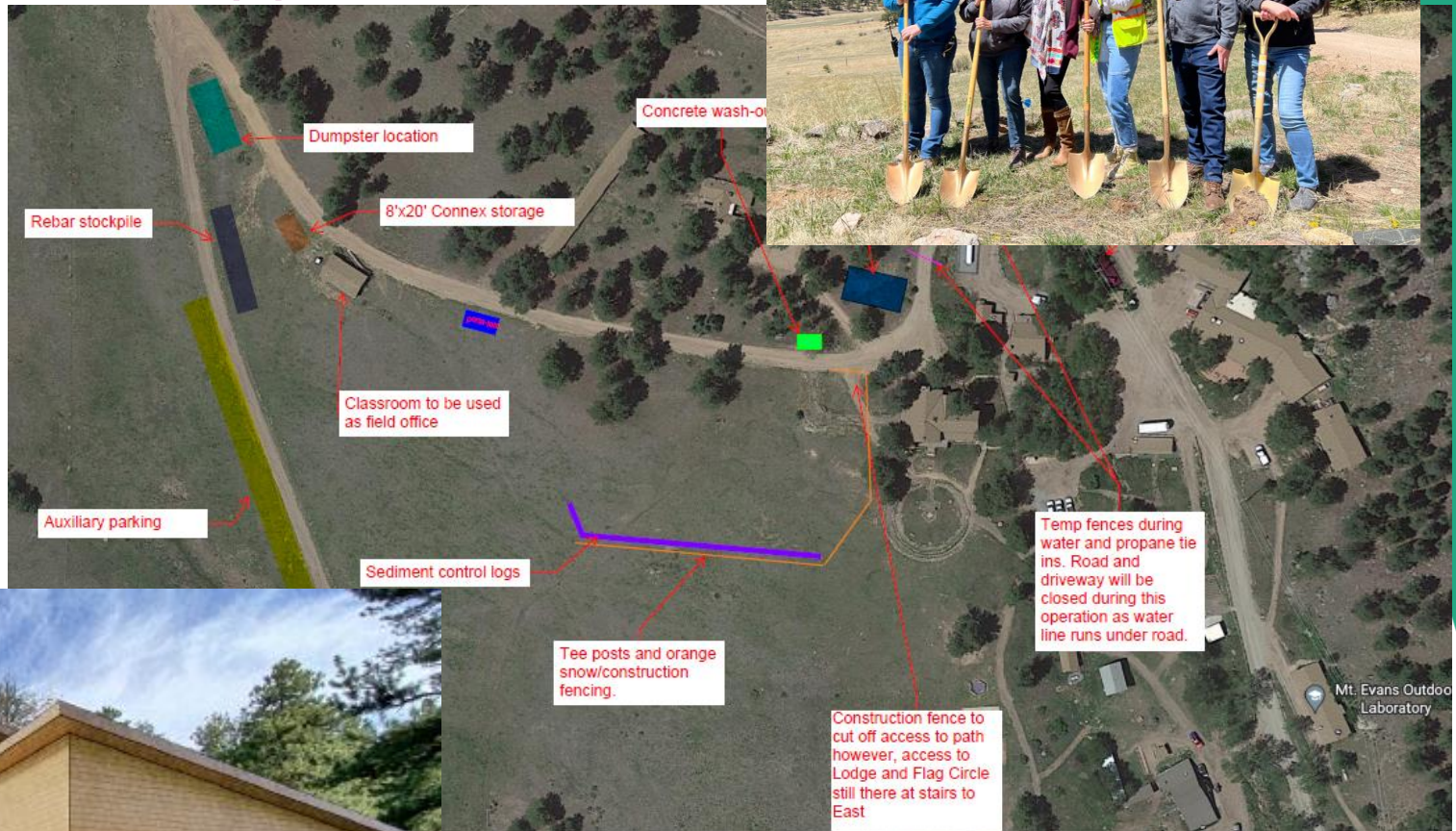
Construction



# Efficiency Future Ready Mount Evans OEL

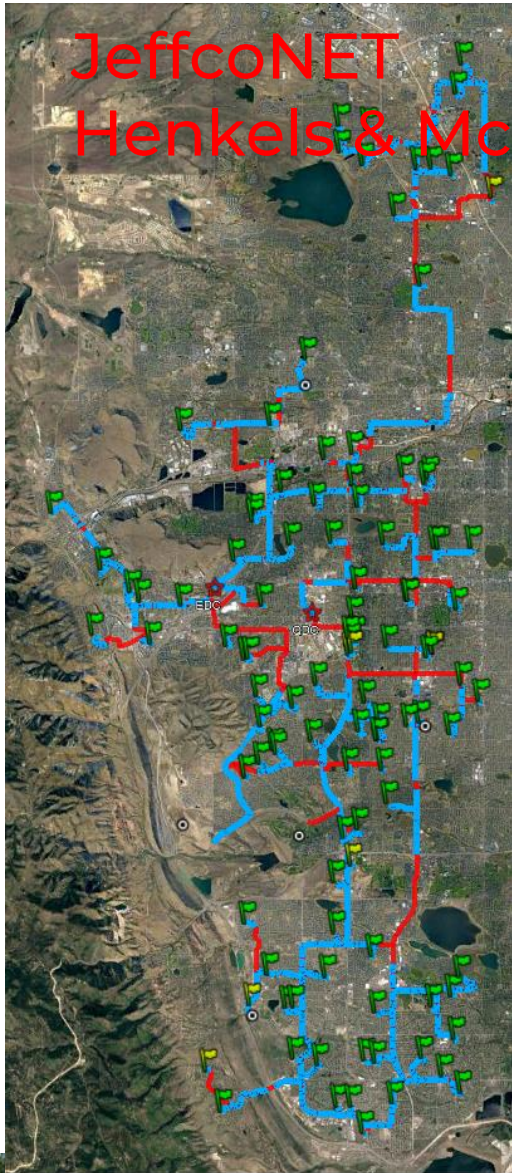
## HCM – GH Phipps

### Construction





# JeffcoNET Henkels & McCoy



## Project Information

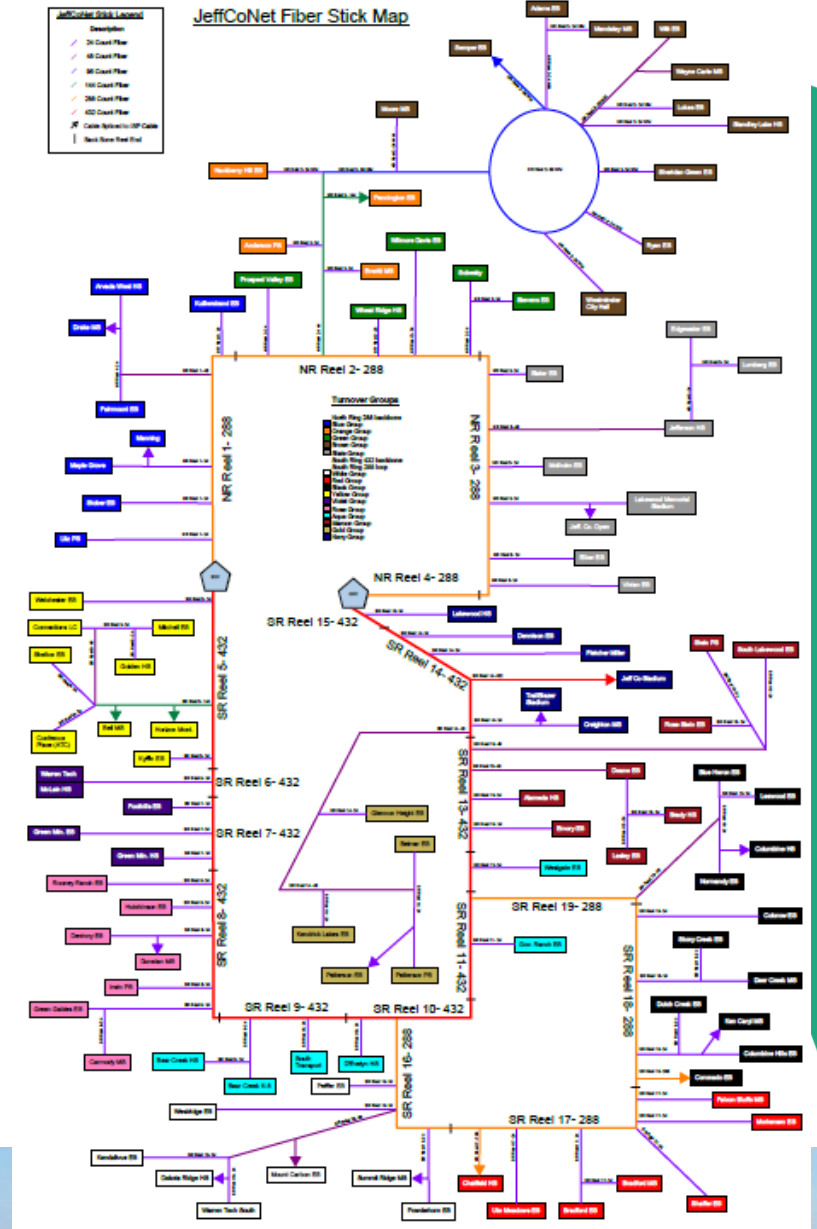
Project Start  
April 29, 2020

Total Miles of conduit  
to be bored 114

Miles installed  
79 (66%) (Blue)

Fiber placed at  
104 of 111 schools  
(MDF to Street)

12 boring crews



2022

37 - Efficiency Future  
Ready  
&  
DW projects

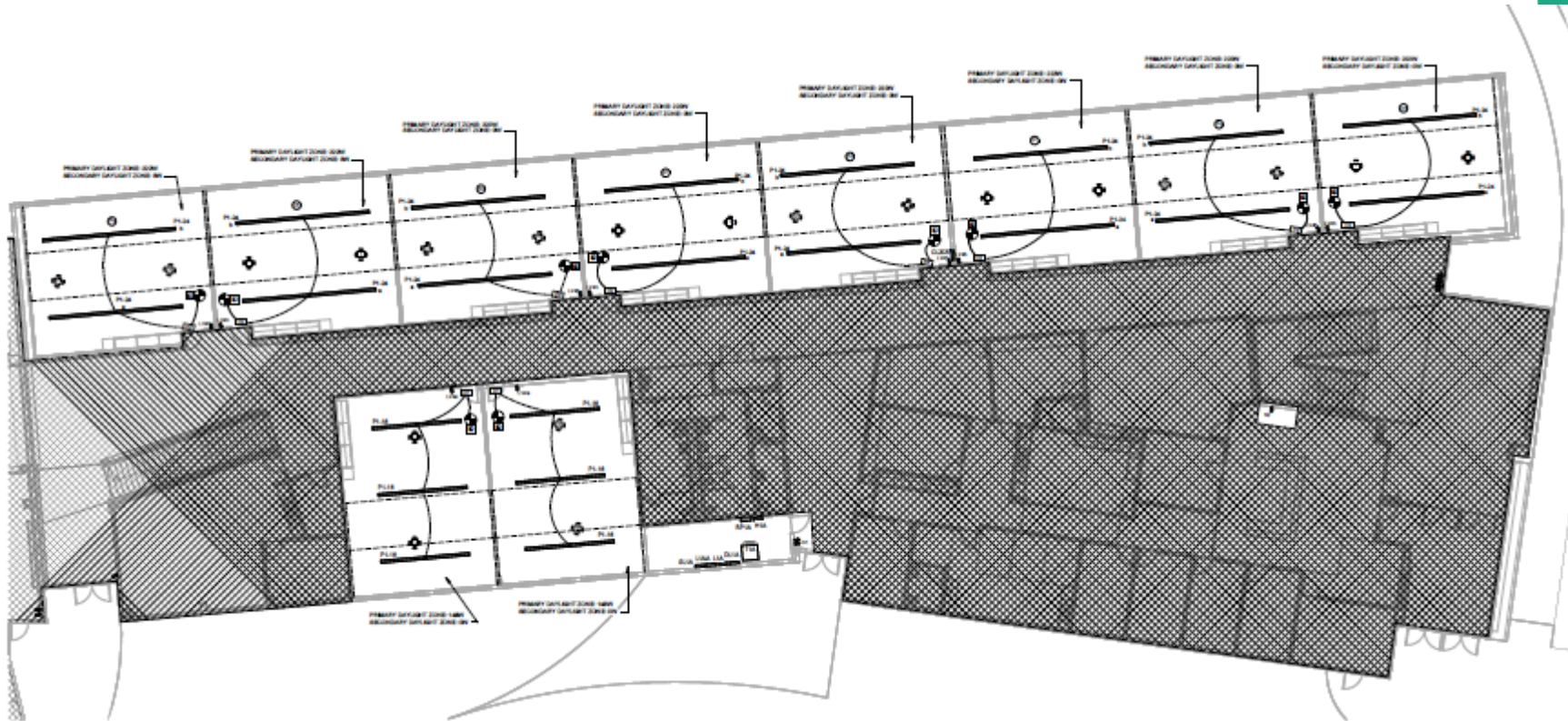


# Efficiency Future Ready Golden HS

Construction

## H&M – Singletrack

Pendant fixtures are late – arrive early to mid July



# Efficiency Future Ready Mitchell ES

Construction

## H&M – Singletrack



# Efficiency Future Ready Elk Creek ES

BVH – SCS

Construction



# Efficiency Future Ready West Jefferson ES

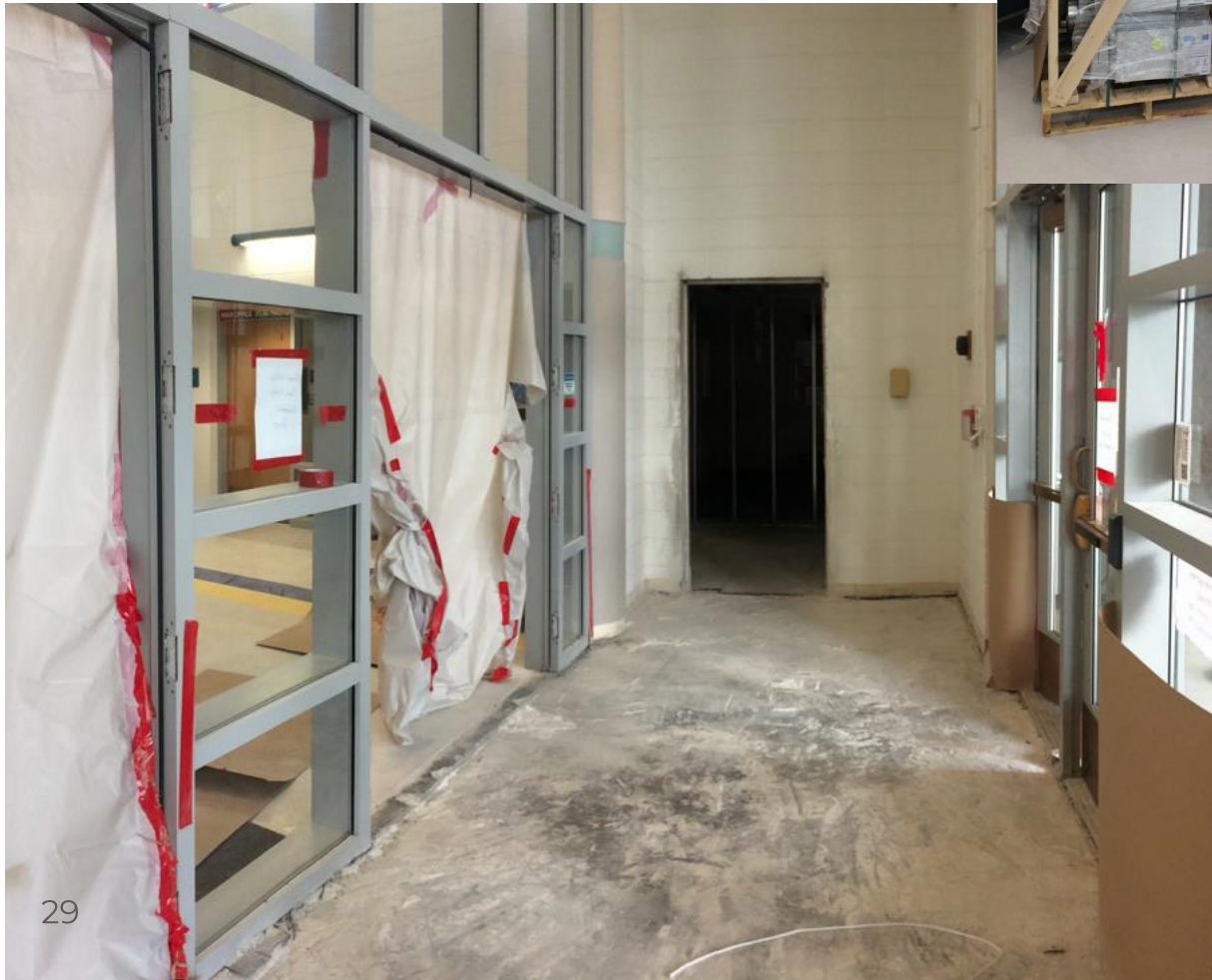
Construction

## BVH – Bryan



# Efficiency Future Ready Emory ES

Treanor HL– Crossland



# Efficiency Future Ready Red Rocks ES

Treanor HL- Crossland

Construction



# Efficiency Future Ready Lakewood HS

Construction

HCM – AD Miller



# Efficiency Future Ready Westgate ES

Construction

Treanor HL – AD Miller





# Efficiency Future Ready Longview HS

Construction

## Mellin & Associates – Singletrack



# Efficiency Future Ready Shelton ES

Construction

Mellin & Associates – Himmelman



# Efficiency Future Ready Stevens ES

Construction

AMD – PG Arnold



# Efficiency Future Ready Green Mountain ES

Construction

AMD – PG Arnold



# Efficiency Future Ready Thomson ES

AMD – Bryan

Construction



# Efficiency Future Ready Stony Creek ES

Jordin – Calahan

Construction



# Efficiency Future Ready Bear Creek HS

MOA – Crossland

Construction



# Efficiency Future Ready Warder ES

RB+B – Golden Triangle

## Construction





# Efficiency Future Ready Warren Tech North

Construction

## LOA – Golden Triangle



# Efficiency Future Ready Arvada West HS

Construction

## LOA – Golden Triangle



# Efficiency Future Ready Bergen Valley ES

Construction

## EUA – Interlock



# Efficiency Future Ready Slater ES

Construction

Eidos – Bryan



# Efficiency Future Ready Wilmore Davis ES

Construction

Eidos – Mark Young



# Efficiency Future Ready North Arvada MS

Construction

## Eidos – Bryan



# Efficiency Future Ready Peck ES

Construction

Larson Incitti – AD Miller



# Efficiency Future Ready Secret ES

Construction

Larson Incitti – AD Miller

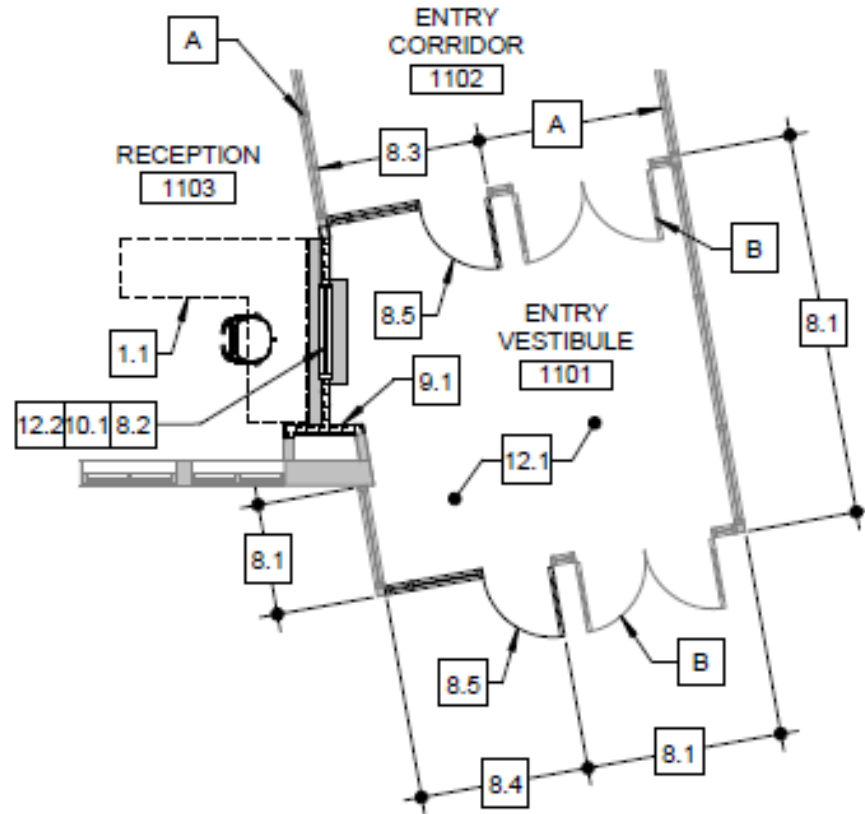




# Efficiency Future Ready Creighton MS

Construction

Larson Incitti – AD Miller



DW – Roofing  
Pennington ES  
Roof Tech – Grabau

Construction



DW – Roofing -

Construction

Campbell ES (Grabau), Fairmount ES (FR) ,  
S Lakewood ES (DC), & Summit Ridge MS (UM)  
SR+DK



S Lakewood



Campbell



Fairmount

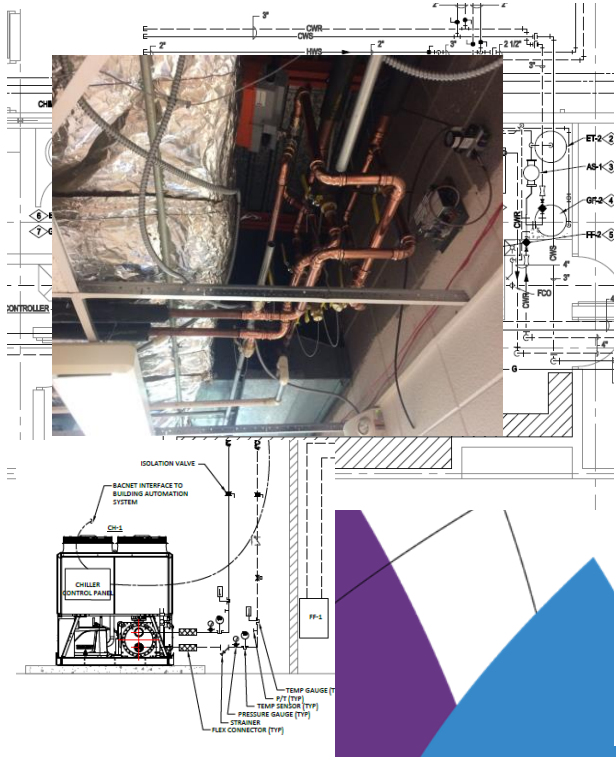


Summit Ridge

## DW Mechanical 2022 Campbell ES AHU & Chiller, Little ES RTU & Van Arsdale ES RTU

### Columbine Engineering – US Engineering

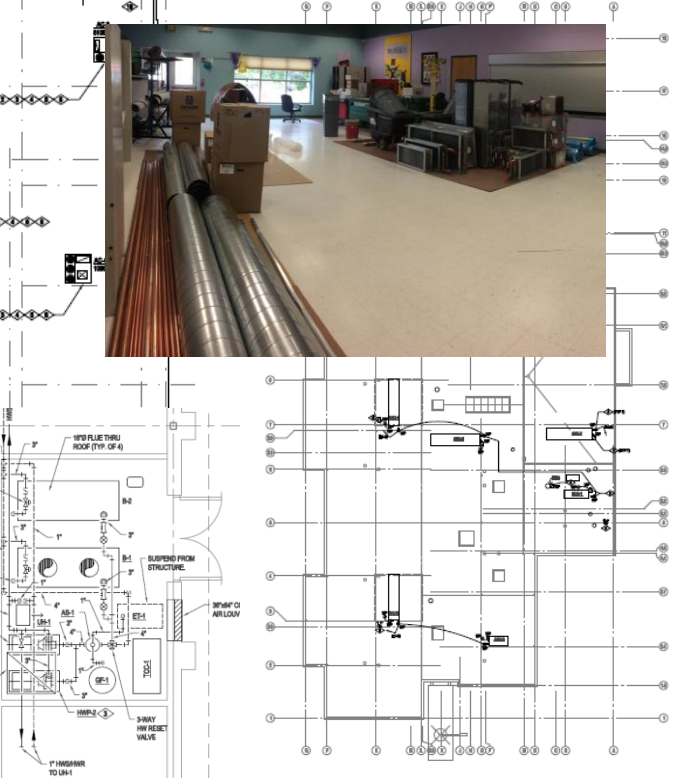
#### Campbell ES



#### Little ES

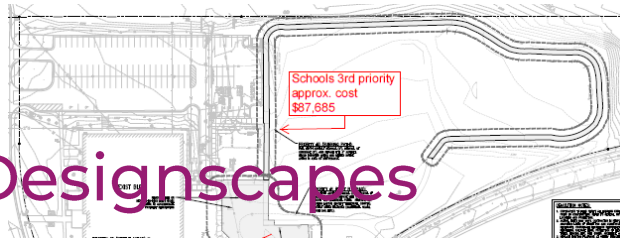


#### Van Arsdale ES

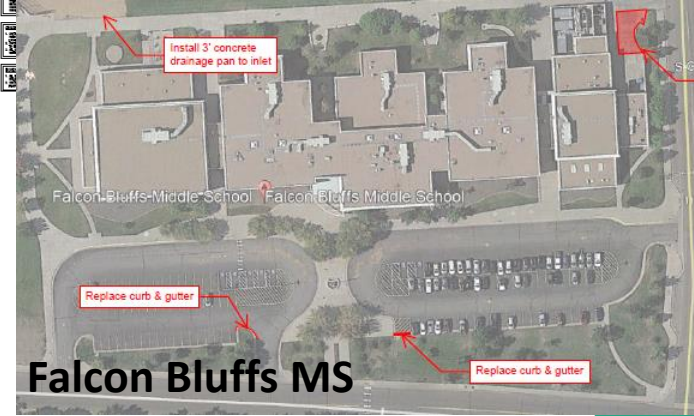


# DW Paving 2022 JVA – Colorado Designscapes

## Construction



Thomson ES



Falcon Bluffs MS



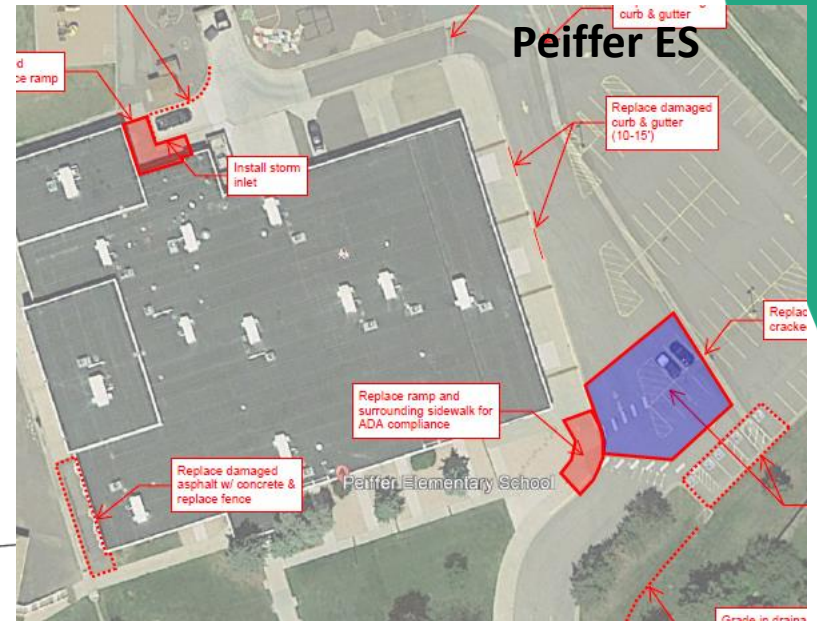
Campbell ES



Little ES



South Lakewood ES



Peiffer ES

# DW – Flooring I Falcon Bluffs MS, Summit Ridge MS, & Peiffer ES

## AMD – PG Arnold

Summit5 MS



Falcon Bluffs MS



Peiffer ES



# DW – Flooring I

Construction

*Governor's Ranch ES, Mt Carbon ES,  
Rooney Ranch ES*  
AMD – SCS



*Mt Carbon ES*

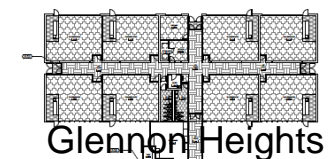


*Rooney Ranch ES*

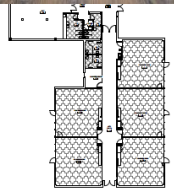


*Governor's Ranch ES*

DW – Flooring II  
Glennon Heights ES, Little ES, Parr ES  
Pennington ES, S Lakewood ES  
Swanson ES, Van Arsdale ES  
studiotrope – McCauley Constructors



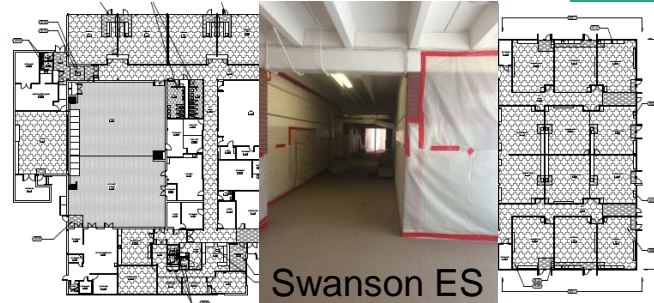
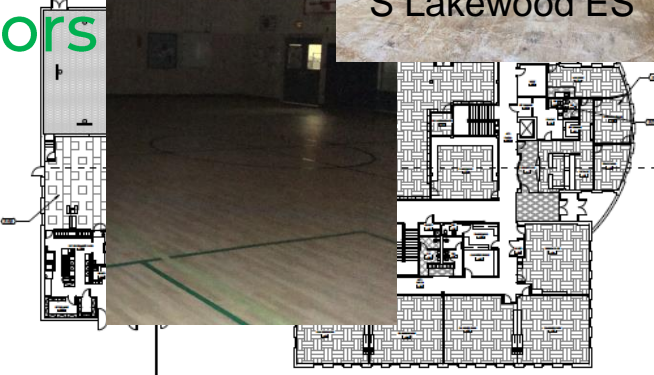
Glennon Heights



Parr ES



S Lakewood ES



Swanson ES



Little ES



Pennington ES



Van Arsdale ES





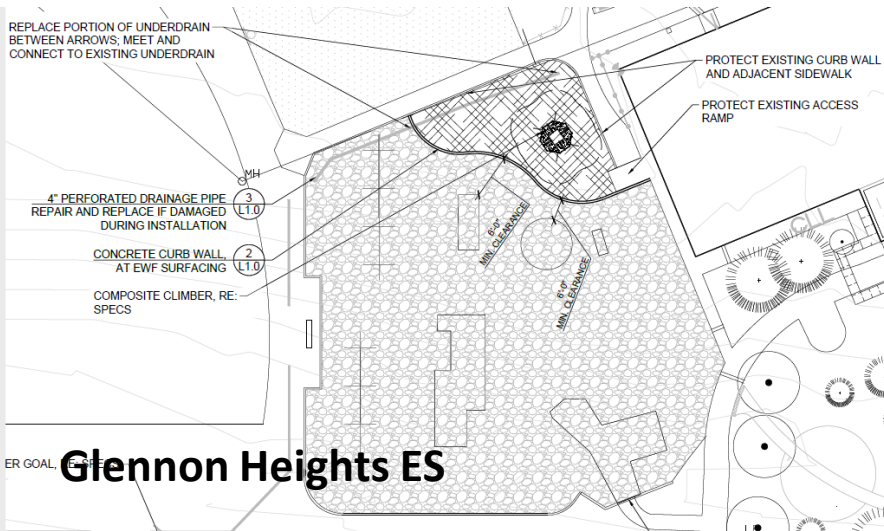
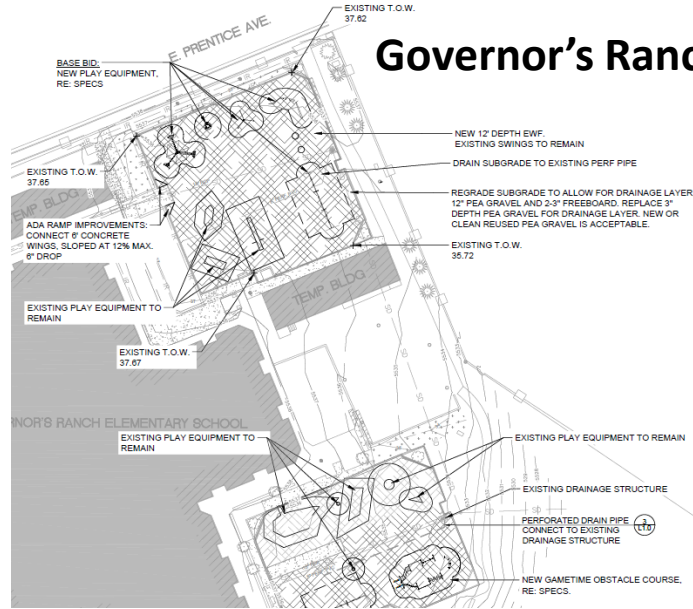
## DW Playgrounds I 2022 Design Concepts – Arrow J

### Peiffer ES



### Mt. Carbon ES

### Governor's Ranch ES



### Glennon Heights ES

# DW LED 2022

## Ackerman – CMGC McKinstry

### Construction Documents



1. Brady
2. Bradford North
3. Bradford South
4. Ute Meadows ES
5. Leawood ES
6. Normandy ES
7. Rooney Ranch ES
8. Creighton MS
9. Moore MS
10. Mandalay MS
11. Deer Creek MS
12. Lawrence
13. Weber ES
14. Meiklejohn
15. West Woods
16. Chatfield HS
17. Dakota Ridge HS

# Security Glass Installation 11 - Schools

Swanson 90%      Glennon Heights  
Arvada West      S Lakewood 15%  
Campbell      Little 75%  
Fairmount      Parr - Complete  
Bear Creek K8      Pennington  
Summit Ridge



2023

35 - Efficiency Future  
Ready  
&  
DW projects

# Efficiency Future Ready Wheat Ridge HS

Eidos – TBD

Design  
Development  
Bid October



# 2023 New Efficiency Future Ready & DW Projects

Location	Sched	Description
UTE Meadows	9/1/2022	Late Summer Re-Bid Efficiency & Future Ready
Blue Heron	9/1/2022	Late Summer Re-Bid Efficiency & Future Ready
Mortensen	9/1/2022	Late Summer Re-Bid Efficiency & Future Ready
Shaffer	9/1/2022	Late Summer Re-Bid Efficiency & Future Ready
DW FA Upgrade	9/1/2022	FA Upgrade required by Fire Department - Pomona, D' Evelyn, Lakewood HS
DW LED	9/1/2022	Blue Heron, Mortensen, Shaffer, Bergen Valley
Swanson	9/1/2022	Efficiency & Future Ready
Van Arsdale	9/1/2022	Efficiency & Future Ready
Oberon	9/1/2022	Addition
Governors Ranch	9/1/2022	Efficiency & Future Ready
Bear Creek K-8	9/1/2022	Efficiency & Future Ready
Falcon Bluffs MS	9/1/2022	Efficiency & Future Ready
Pennington ES	9/1/2022	Add one section of roof to raise mech unit
Campbell	9/1/2022	Efficiency & Future Ready
Molholm	9/1/2022	Addition
Fairmount Mechanical	9/1/2022	Late Summer Re-Bid 2022 HVAC Project
DW Mechanical 2023	9/1/2022	Westwoods \$1,174,950 Bradford South \$1,304,100 Sobesky (old stevens) \$777,000 boiler priority may be

Location	Sched	Description
Glennon Heights	9/1/2022	Efficiency & Future Ready
Edgewater	9/1/2022	Addition
Ken Caryl	9/1/2022	Efficiency & Future Ready -
Little	9/1/2022	Efficiency & Future Ready
Parr	9/1/2022	Efficiency & Future Ready
S Lakewood	9/1/2022	Efficiency & Future Ready - 2 air handlers are shot - not in scope
Connections	9/1/2022	Efficiency & Future Ready
Coal Creek K8	9/1/2022	Efficiency & Future Ready
Warren Tech Central	9/1/2022	Efficiency & Future Ready -
Deer Creek/ Mandalay ffe / Moore MS ff	9/1/2022	Late Summer Bid Efficiency & Future Ready
Kendallvue	9/1/2022	Efficiency & Future Ready
Mt Carbon	9/1/2022	Efficiency & Future Ready
Peiffer	9/1/2022	Efficiency & Future Ready
Summit Ridge	9/1/2022	Efficiency & Future Ready
Drake Middle	9/1/2022	Efficiency & Future Ready
Bergen Meadow	9/1/2022	Efficiency & Future Ready
Dunstan MS	9/1/2022	Efficiency & Future Ready

# Next Meeting 7/21/22